



## One-Piece Short Sleeve

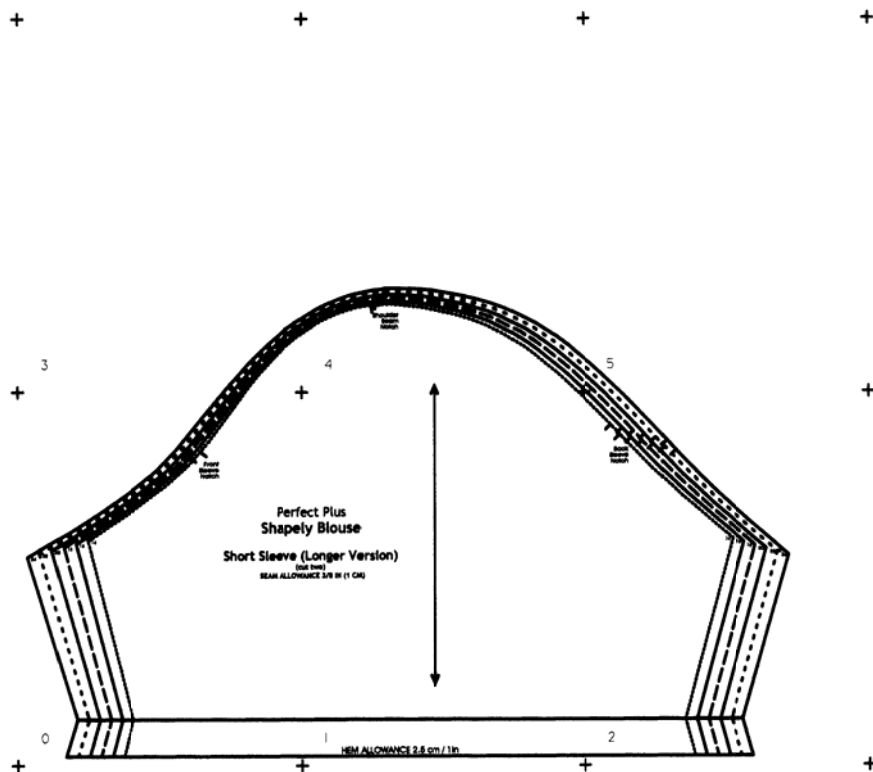
This short sleeve finishes just above the elbow and will fit into the armhole of the *Perfect Plus* Shapely Blouse and Simple Jacket, the #203 Wrap Jacket & Blouse and the #108 Yoked Blouse.

The sleeve pattern has sizes 12 to 24. (You will not be able to use size 12 on *Perfect Plus* patterns as they begin at size 14.)

Please note that while the sleeve fits into these armholes, there may be a slight variance with the notches. So, as you set in the sleeve, keep in mind that the sleeve sits “one to one” along the underarm of the armhole, while the cap has some ease between the front and back notches.

The sleeve pattern will print off onto six 8 1/2 by 11 sheets of paper. (Sorry, I couldn't get it onto less than that.)

Each sheet of paper has a built in overlap of about 1/2 inch and registration marks at each corner. Once printed, the registration marks can be matched, then the pages taped together to form your full-sized pattern piece.



### Petite Plus Patterns

785 First Street,  
PO Box 157  
Sointula, B.C. Canada  
V0N 3E0

TEL: (250) 973-2327  
FAX: (250) 973-6005

TOLL-FREE  
CANADA & USA:  
1-877-909-8668

[info@petitepluspatterns.com](mailto:info@petitepluspatterns.com)  
[www.petitepluspatterns.com](http://www.petitepluspatterns.com)

Each sheet of paper is numbered in the bottom left hand corner.

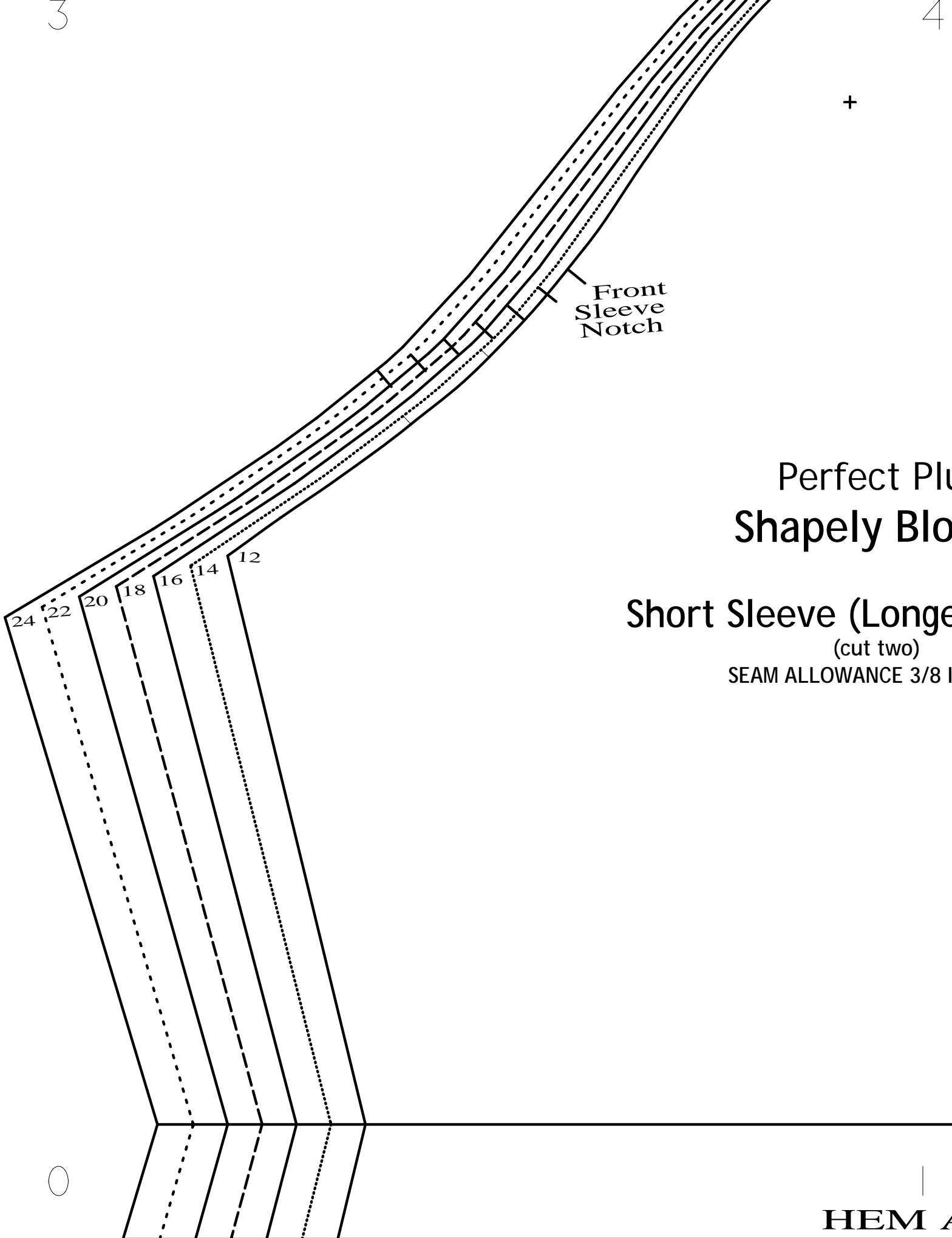
The page marked 0 is your first page as you work from left to right.

3

4

+

+



Front  
Sleeve  
Notch

Perfect Plus  
Shapely Blo

Short Sleeve (Longer)  
(cut two)  
SEAM ALLOWANCE 3/8 IN

0

HEM A

+

+

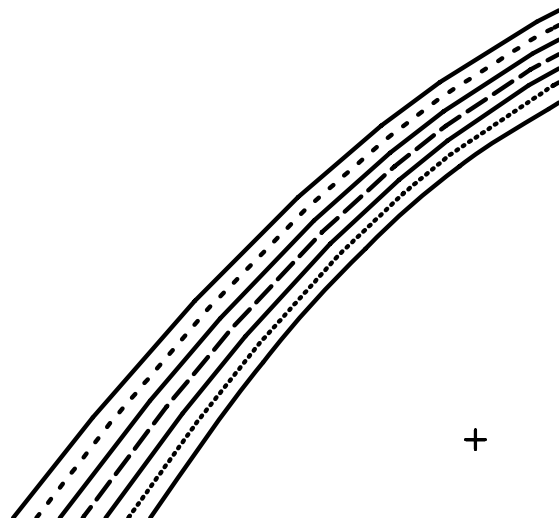
+

+

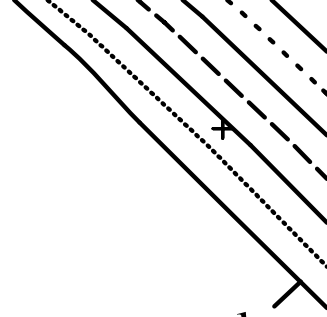
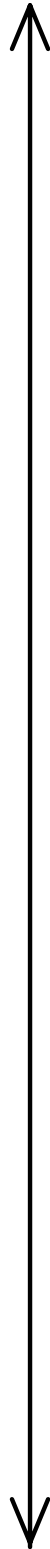
3

+

+



+



Back  
Sleeve  
Notch

# Perfect Plus Sleeve Blouse

## Sleeve (Longer Version)

(cut two)

ALLOWANCE 3/8 IN (1 CM)

---

HEM ALLOWANCE 2.5 cm / 1in

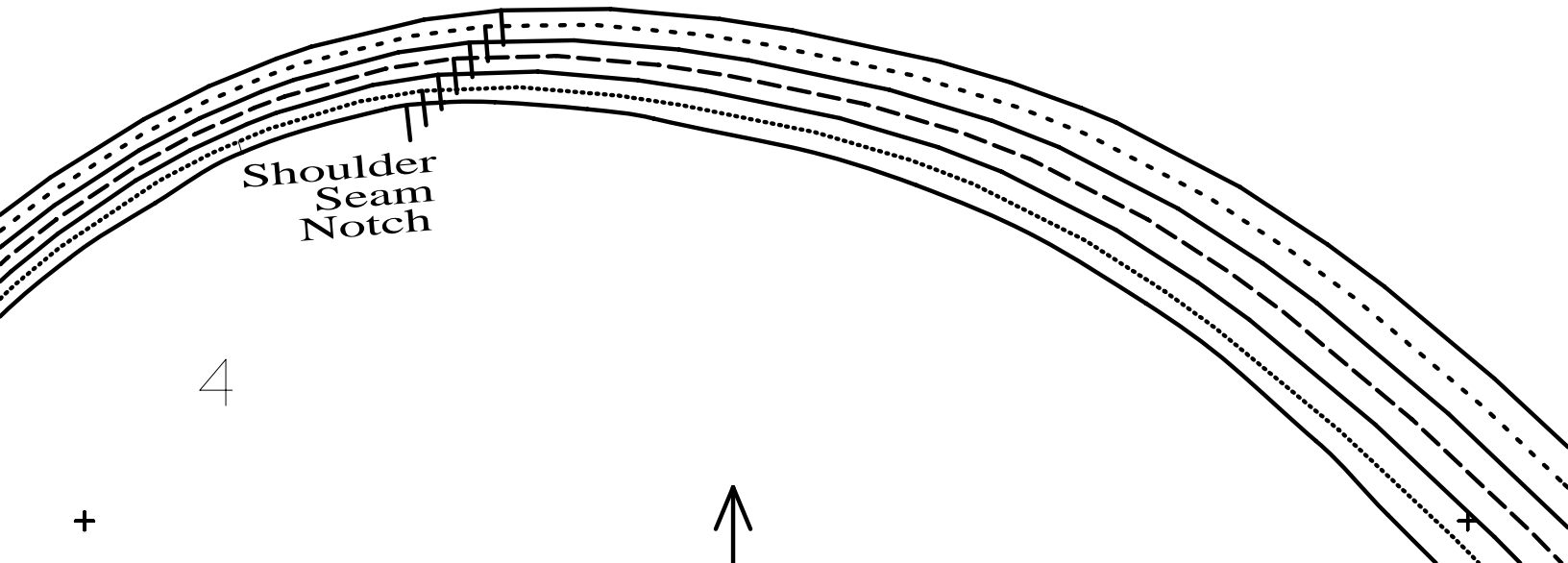
---

+

+

+

+



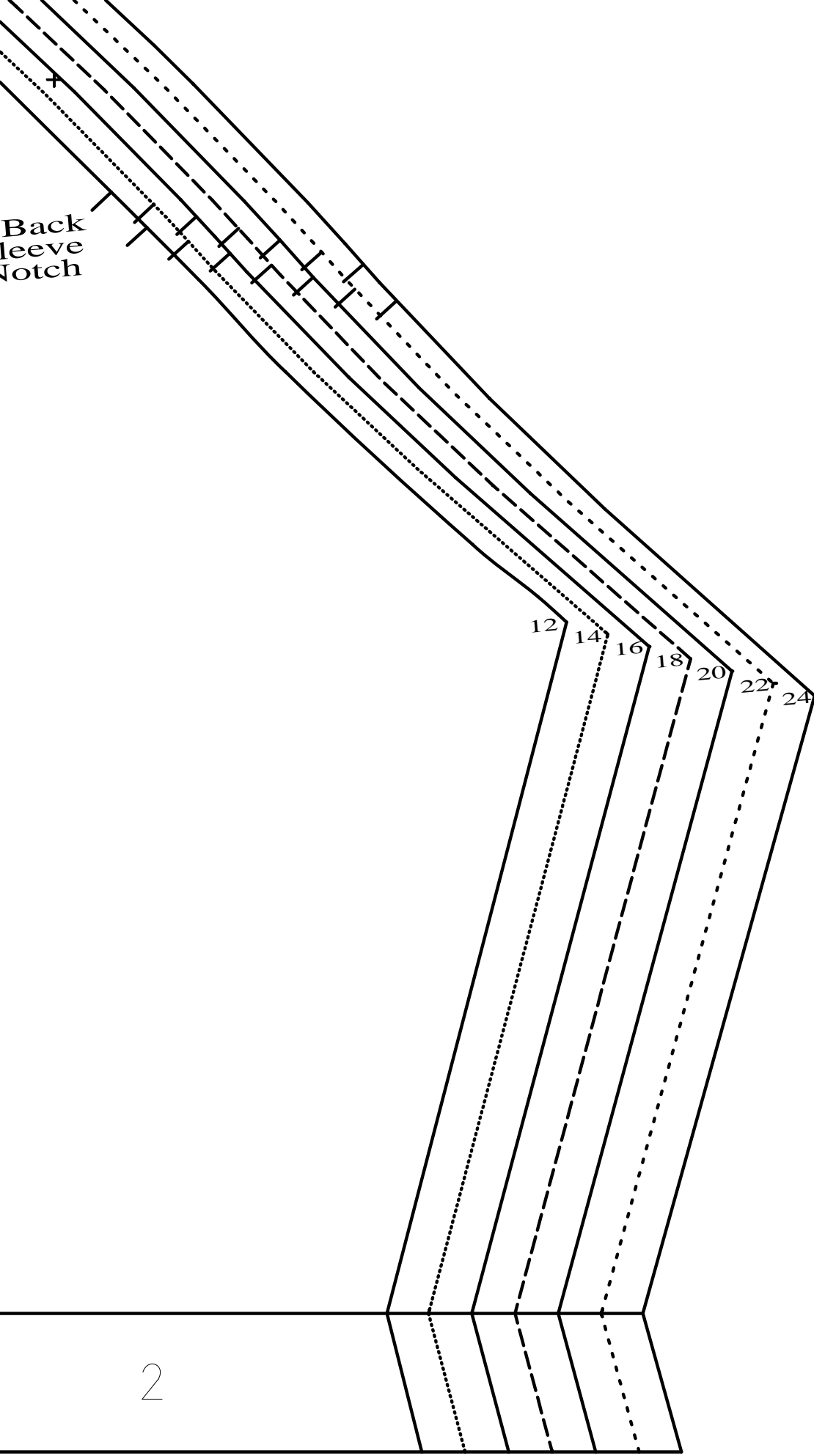
Shoulder  
Seam  
Notch

4

+



+



+

+

+

+

5

+

+