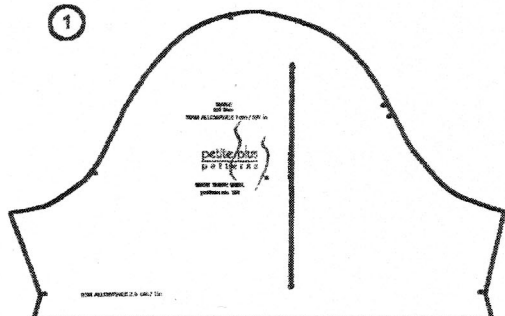


# The Frilly Sleeve

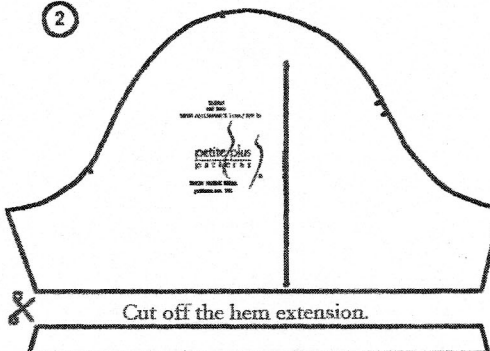
We use the sleeve from Petite Plus Patterns  
#101 Short Sleeve Shell for our Frilly Sleeve

1

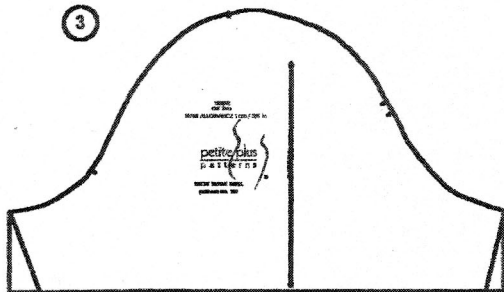


Trace off a separate sleeve pattern.

2

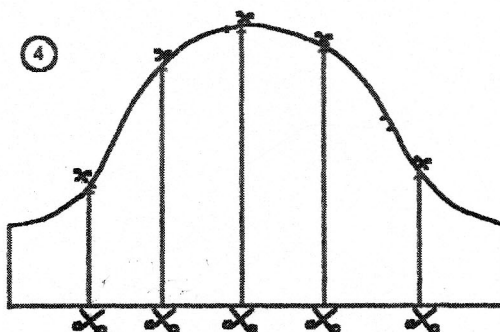


3



Straighten the underarm seams  
with a line straight down.

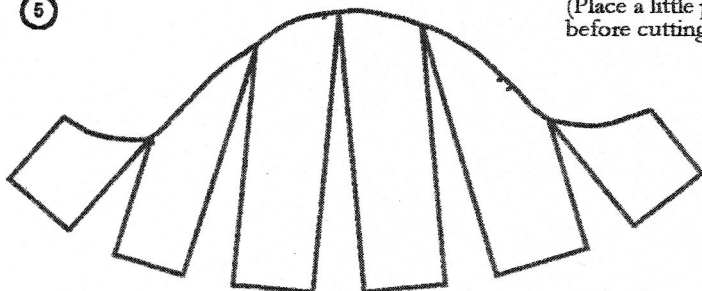
4



Divide the sleeve into 6 parts.  
They should be close to the same size.

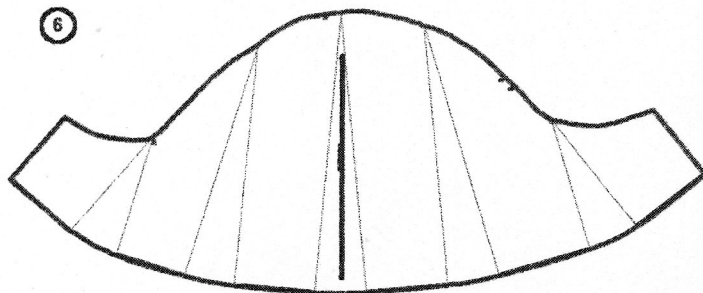
Cut up to the seam allowance and stop.  
Then clip in from the seam allowance  
leaving a tiny hinge of paper.  
(Place a little piece of tape at the hinge point  
before cutting. It will reinforce the tissue.)

5



Open your sleeve pattern an equal amount at each cut.  
(This can vary according to how frilly you want the sleeve 1 - 2 inches or more.)

6



Secure the sleeve pattern to paper with tape.  
Redraw the finish line.  
Add hem allowance.

Two ideas for hems:

Add a very small amount - 1 cm (3/8 in). Serge finish.  
Turn up and topstitch.

Or - Don't add any extra.  
Simply serge finish and leave as is.

copyright 2003  
Kathleen Chatham  
Petite Plus Patterns

For more great wardrobe ideas teach us at:

[www.petitepluspatterns.com](http://www.petitepluspatterns.com)

or 1-877-909-8668 toll-free