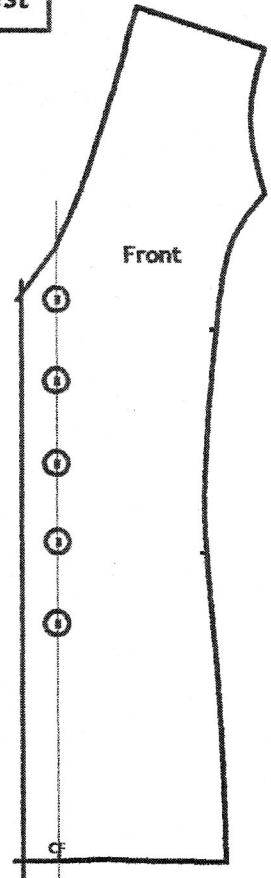
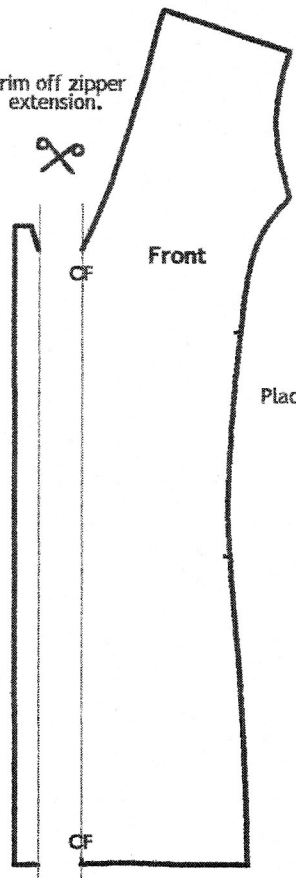


Add Buttons to the #152 Zip Front Vest

Trim off zipper extension.



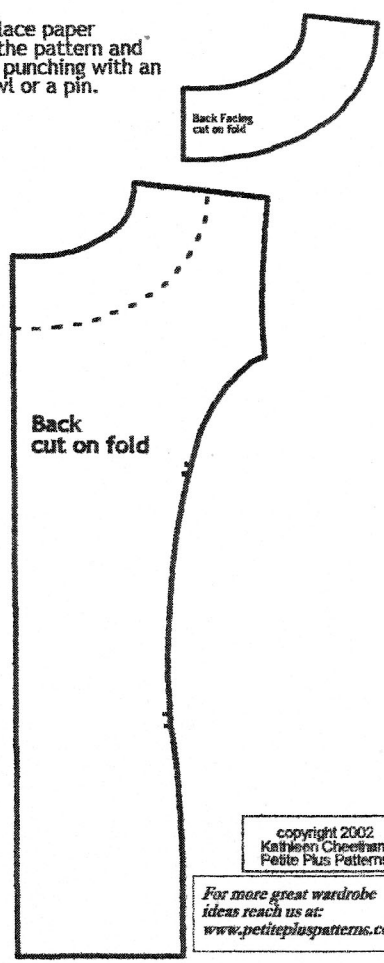
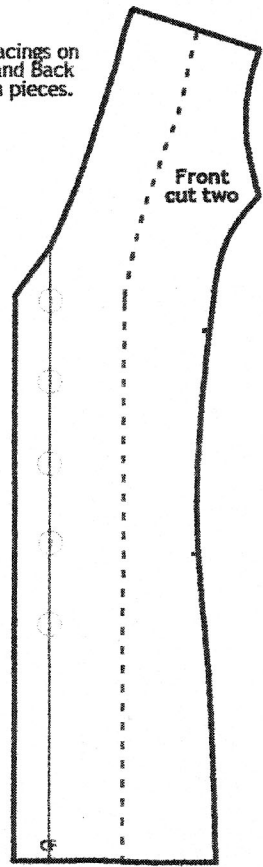
To calculate how wide an overlap to add, Place your buttons along CF line.

Measure out another .8 cm or 1/4 in plus seam allowance.

We measured in 6 cm (2 1/2 in) along neck edge then 9 cm (3 1/2 in) along the button edge.

Place paper under the pattern and trace by punching with an awl or a pin.

Draw Facings on Front and Back pattern pieces.



Back Facing cut on fold

Back cut on fold

copyright 2002
Kathleen Cheatham
Petite Plus Patterns

For more great wardrobe ideas reach us at:
www.petitepluspatterns.com