



## Create an Evening Dress with #103 Button Front Blouse

It's simpler to make than it looks!

Use **Front, Back & Sleeve** pieces only.

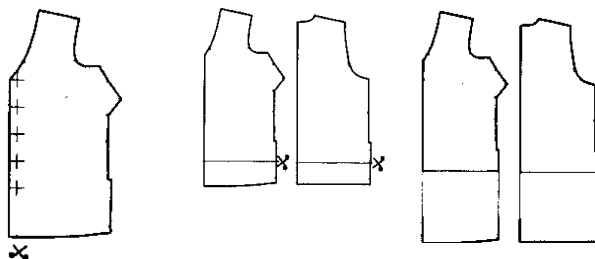


The front is cut on fold, as is the back and there are no zippers to insert. Just pull the dress over your head.

In the sample shown, the dress is made of sheer, pre-embellished fabric purchased from the special occasion section of the fabric store. It is worn over a lengthened **All Season Dress**.

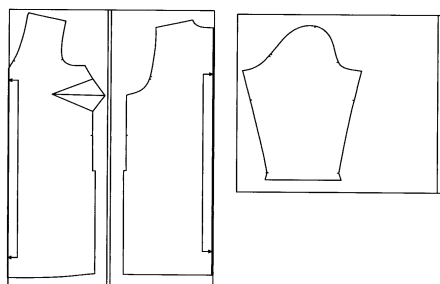
Add an **extra .5 m (1/2 yd)** to your fabric purchase for this version.

On the Blouse Front, **trim** off or fold back along CF to eliminate the button overlap.



We **lengthened** the Front & Back of the blouse pattern about 40 cm (16 in) for a below knee version.

Lay both Front and Back pieces with centres on fold.



**Construct** blouse using the guide sheet instructions. **Omit** sections on interfacing, facings, collar, buttons and button holes.

The neckline is finished with bias binding. Use purchased binding or cut your own.

For self fabric trim, cut a **strip of fabric on the bias** that measures 90 cm (36 in) long by 5 cm (2 in) wide.



You may hem the sleeves or add a fake cuff as we did in this sample.

For instructions, see our Pattern Extender, "**Fast Fake Cuff**".