



Create an Evening Topper with #103 Button Front Blouse

This easy topper looks fabulous worn over the **All Season Dress** or over a **Pant** ensemble.

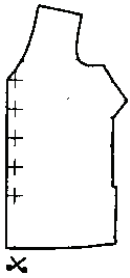
Add an **extra .5 m (1/2 yd)** to your fabric purchase.

Choose a sheer and flowing fabric.

Our silver/beige topper is made from silk devore.

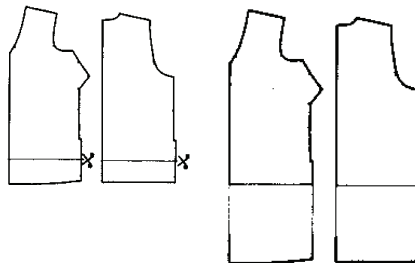
The pink topper is in polyester chiffon.

Use **Front, Back & Sleeve** pieces only.



Trim off the button overlap on the blouse Front.

Lengthen the Front & Back of the blouse pattern. We lengthened ours by 30 cm (12 in).



Cut a **scarf** that measures 180 to 210 cm (72 to 82 in) long by 25 to 30 cm (8 to 12 in) wide. (You will have a nicer drape if you cut the scarf on the **bias**.)



Angle the ends of the scarf. Turn and **top stitch** the raw edges of the scarf.

Mark the centre and the shoulder points from the back neck. (**Transfer** these measurements from the pattern notches on the collar piece.)



Construct blouse using the guide sheet instructions. **Omit** sections on interfacing, facings, collar, buttons and button holes.

Turn and top stitch raw edges along center front and neckline of the blouse.

Center the finished scarf onto the back neck and **top stitch** from shoulder seam to shoulder seam.

To keep scarf in place along front, fold accordion style and **anchor** at the waist with machine stitching.

